

Noble Demonstration State Forest

The Department received ownership of the property on December 7th, 2022.

Acquisition of the property by the California Department of Forestry and Fire Protection was made possible due to a certain Settlement Agreement as modified and approved by the Public Utilities Commission of the State of California in its Opinion and Order December 18, 2003 (Decision 02-12-035). In furtherance of the Settlement Agreement, and to provide additional detail regarding the implementation of PG&E's "Land Conservation Commitment" the parties of the Settlement Agreement and other interested parties entered a Stipulation Resolving Issues Regarding the Land Conservation Commitment dated September 25, 2003. The combination of these documented formed the "Governing Documents" that required PG&E to ensure that approximately 140,000 acres of their watershed lands were conserved for a board range of beneficial public values, including the protection of natural habitat of fish, wildlife, plants; the preservation of open space; outdoor recreation by the general public; sustainable forestry, agricultural uses; and historic values. As a result of the Stipulated Agreement the conservation values on the property are held under a conservation easement held by the Western Shasta Resource Conservation District.

It is in Shasta County, east of Redding and southeast of Shingletown. Access to the property is off HWY 44 in the vicinity of Grace and Nora Lake. The 2,050 acre State Forest contains various geological features.

The forest supports numerous coniferous tree species of commercial value. Ponderosa Pine, Incense Cedar and Douglas fir.

Near Shingletown, CA, the area is popular with outdoor recreators. Recreational activities include hiking, biking, and horseback riding. Hunting and fishing may be enjoyed in season, and in accordance with the Department of Fish and Wildlife laws and regulations.

The forest is normally accessible year round, with snow being the only access limitation. Visitors should however note the restrictions of "NO UNATHORIZED MOTOR VECHILE USE" applies only to off of the main roads, to protect the local conservation values. Unlike LaTour there are no campgrounds or Potable water found on the Noble DSF.

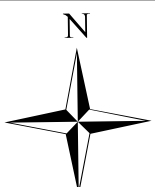
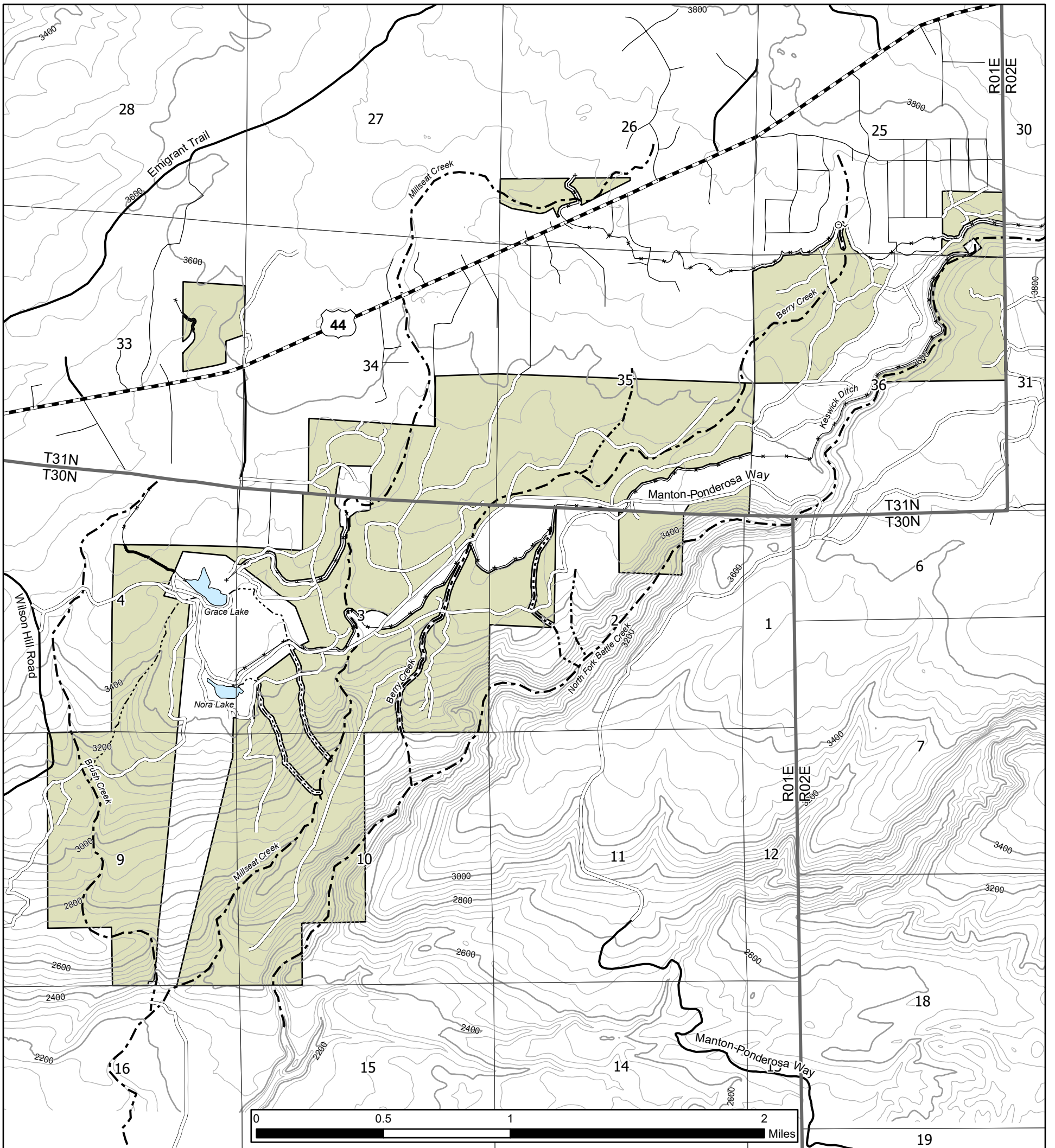


Noble Demonstration State Forest

Shasta-Trinity Unit

A Few Reminders

1. Non-authorized motor vehicle use is prohibited (electric bicycles included).
2. Day use only; no camping is allowed.
3. Practice Leave No Trace Principles.
4. No campfires allowed.
5. If you choose to ride horseback, you are required to supply sufficient feed for riding stock. The stock shall not be turned loose to graze, and when secured must be within reach of water and feed. Pets are allowed but must be on a leash or under restrictive control at all times.



40 Foot Contour Interval
1:26,000
4/24/2023 1:43 PM

Noble DSF	Class I Watercourse	Spring
State Highway 44	Class II Watercourse	Waterbodies
County Road	Class III Watercourse	
Seasonal Road	Class IV	
Private Road		

SHU DSF Vicinity Map

