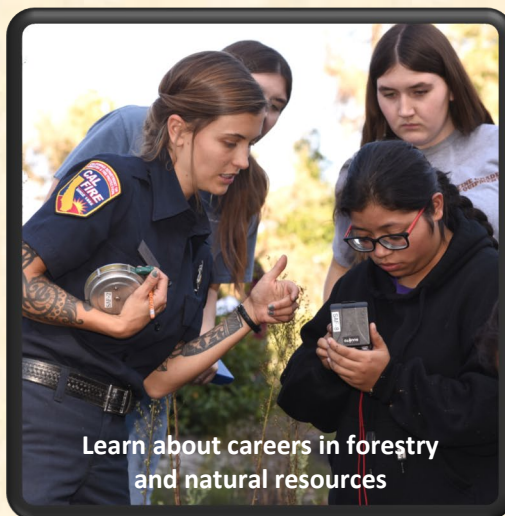
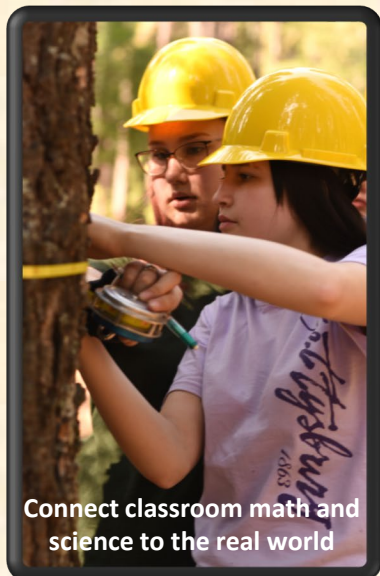


FORESTRY CHALLENGE



Announcing four Forestry Challenge events in the fall of 2021

Shasta - September 29 to October 2
Mountain Meadows Camp east of Redding - \$120/person*

Santa Cruz - October 13 to 16
Redwood Glen near Loma Mar - \$215/person*

El Dorado - October 27 to 30
Leoni Meadows Camp south of Placerville - \$130/person*

San Bernardino - November 10 to 13
Hume SoCal near Lake Arrowhead - \$215/person*

This in-person event schedule is tentative, and the events may change to a virtual or hybrid format if schools are not allowed to participate due to COVID. If in-person, schools can attend any event that is the best fit for location, school schedule, and student interest.

*Registration fees listed above are the full amount and do not include the pre-registration discount. Pre-register by June 30, 2021 to qualify for a 50% registration fee discount.

The Forestry Challenge is an academic event for high school students in technical forestry and current forestry topics. Participants spend four days in the forest learning about the ecology and management of the forested landscapes that provide communities with water, recreational opportunities, wood products, and wildlife habitat. Students take on a rigorous critical thinking exercise which is timely and addresses current forestry topics such as wildfire, insects, and forest health.

"My students learn more in 48 hours than they do in one semester at school." -- Teacher, Shasta event

"I had a fantastic experience, and I am now considering the forestry profession." -- Student, El Dorado event

For more information, visit the website at www.forestrychallenge.org or contact Forestry Challenge Coordinator Diane Dealey Neill at 530-417-1960 or dianedealeyneill@gmail.com.